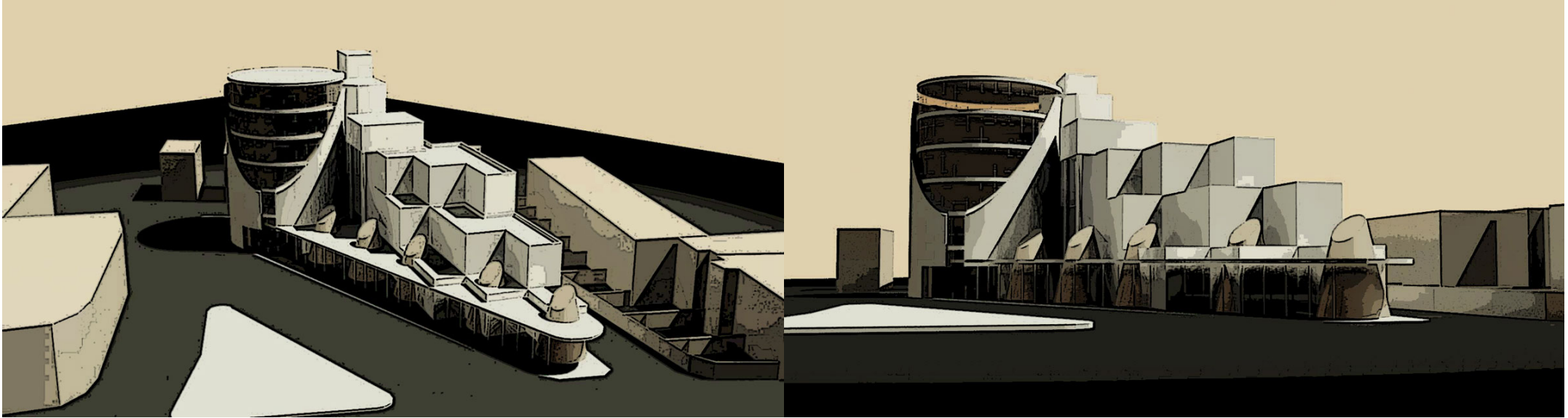
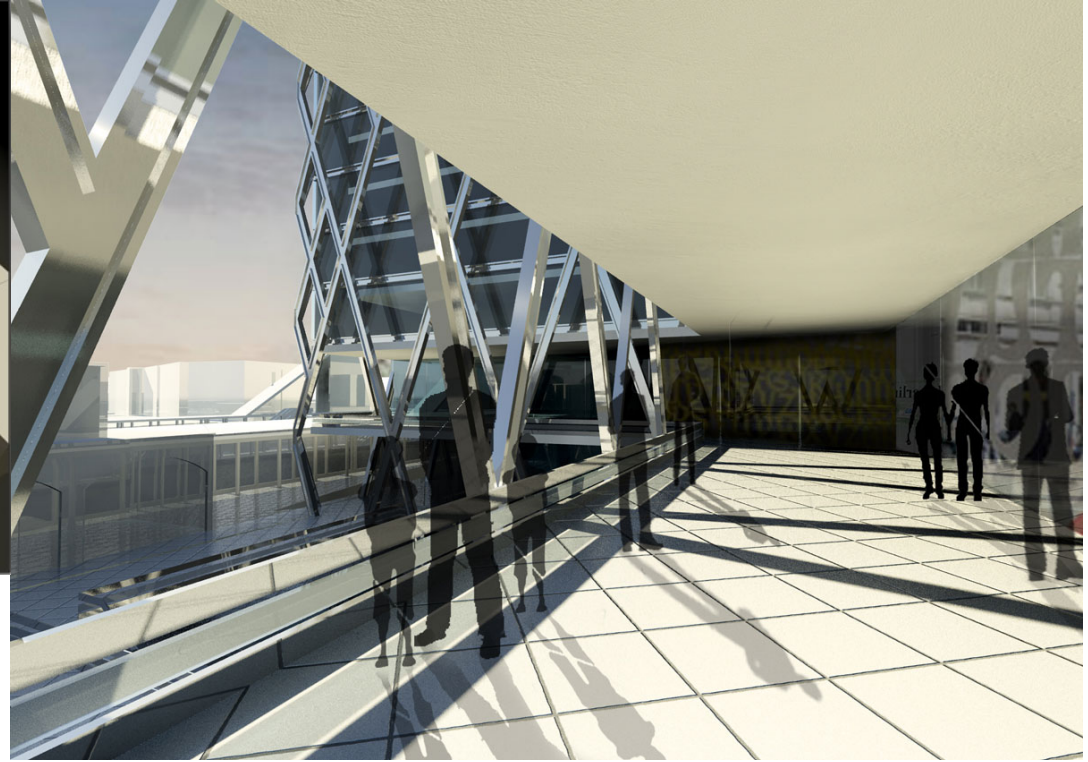
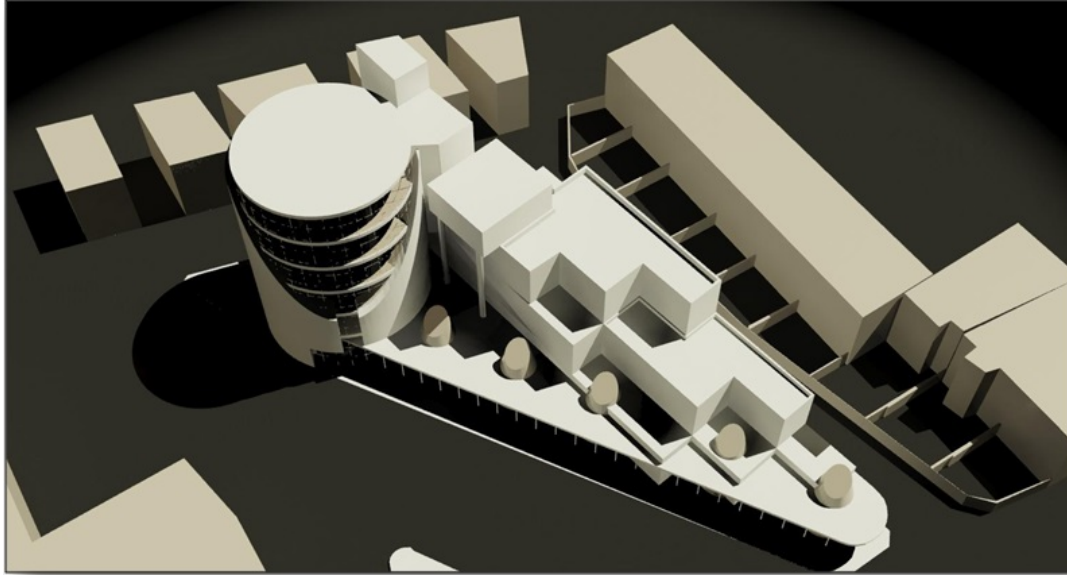




POUR BIRAK COMPLEXE STATION (OFFICES-COMMERCIAL)

This station is one of the second line of metro stations which is located in high population density part and high demand of circulation.







The punctual reviews of project area show that complexes station in current and future situation need managed space and high degree of social security. The surface area of complexes stations is 2140 m² and the foundation is more than 13704 m² that is designed with commercial and offices utilization so due to low distance from station gallery has high value for



investment.

